

## Integrator™ 2012

1

### Architecture

Built upon a proven and business strength architecture providing the security and scalability to integrate the largest of system data

### Ease of use

Clean, concise and intuitive application makes the visualization of your systems to be integrated simple and effective

### Capability

Transfer data between a wide variety and expanding suite of tools, ensure they are synchronized and manage conflicts when they arise

### Automate

Let the Integrator take care of your integrations, set the schedule and let the services control the configurations, and then have the reports drop into your mailbox.

### Cost effective

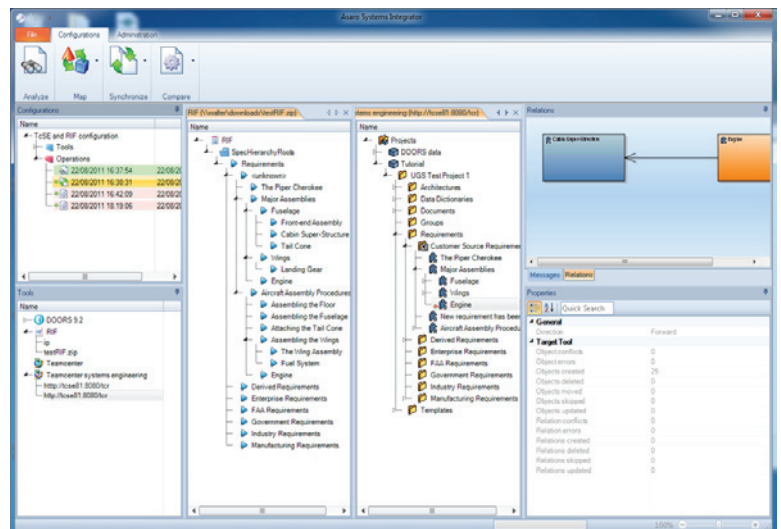
The value of having a central source of information has significant cost savings and quality improvements. Talk with us to see just how low the cost of ownership can be.

**The Integrator 2012 from Asaro Systems is a unique solution for a complex and challenging business problem. The larger the project, the more organizations and tools that will be involved in gathering and maintaining the requirements.**

- **Enterprise collaboration** — Do the many division in your organization understand the building blocks of a project? Can the requirements move with control throughout the feasibility, design and manufacturing phases?
- **Customer/Supplier relationships** — How can you be sure that all organizations are working to the same goals? Can you manage and communicate change efficiently and accurately when faced with multi tool and multi location requirements environments, especially when there is no IT overlap.
- **Product Migration strategies** — Are you trying to standardize on a requirements or PLM toolset? How will you effectively manage the transition?

**The Integrator takes these complex problems and provides a simple solution**

- Provide project wide control across different tool standards
- Manage and accept change between a variety of tools
- Work off-line to enable disparate teams and IT infrastructures to collaborate
- Map objects and attributes to provide continuity of data between different schemas



**The approach to providing Integration solutions is simple and can be broken into several categories.**

### Integrator Hub

The hub does the work, it's controls your configurations, it manages your data and it owns the product connectors.

It provides a framework for the connectors to operate in and out of each product, it manages change, identifies any conflicts, stores the configurations, controls the services and provides you with informative reports on what happened. It is quite rightly the hub of your Integration systems.

### Services and Skills

We offer expertise in and around integrations, we are skilled in integration process as well as the creation of new product connectors

### After sales support

Our support service once you are a customer is outstanding, we have dedicated forums, support hotlines, and a team ready to assist you when you need it.

### Contact us

There are many ways to get in contact with us, we are a professional yet friendly and focused company that welcomes the opportunity to discuss if we can help your projects:

You can contact us via email [info@Asarosystems.com](mailto:info@Asarosystems.com)

Call us on:  
**+44(0)2081444399**

Leave your details on our website:  
[www.asarosystems.com](http://www.asarosystems.com)

Whatever the method we are looking forward to working with you.

### Integrator Connectors

These are the small connectors that are used to read and write the data between the 3rd party tools and standards:

- DOORS
- Teamcenter PLM
- Teamcenter Systems Engineering
- RIF 1.1a, RIF 1.2
- Others

The list of connectors is ever expanding and will include tools from disciplines such as systems modeling, test & verification as well as additional standards that encompass both the requirements and engineering sectors.

If you have a specific tool in mind that isn't currently listed then contact us to discuss your need in more detail.

### Integrator Client

The client provides a simple and intuitive method of creating and administrating your integrations. Once you have selected the products to integrate the tool provides a workflow approach to completing the operation, all of course under each tools existing security policies:

- Connect to the products and choose the source data point as well as the target point for the integration
- Analyze the schemas to identify the objects and properties that exist
- Map the objects, properties and attributes together to integrate the data into you own schemas
- Synchronize the data to create the objects in the target tool

Of course the initial synchronization is important it's the on-going change control that adds the real value to your project, the Integrator will analyze both the target and source products and return to you the differences between the two. This could be on a daily basis or once every 3 months, the choice is yours.

### For simplicity the update is a process driven approach:

- Compare the source and the target
- Identify any new items, any deleted items, any modified items and any new relationships that exist or have been deleted
- Push the changes depending on the settings you have chosen.

Please contact the Asaro Systems team to understand how the Integrator can help you work faster, smarter and more accurately when dealing with the key requirements of your projects.

